

# Maldives Land and Survey Authority,

MINISTRY OF HOUSING AND INFRASTRUCTURE

Ameenee Magu, Maafannu, Male', 20392, Maldives.

Office (PABX): +(960) 3004300, Fax: +(960) 3004254

Email: survey@mhe.gov.mv

Web: www.surveyofmaldives.gov.mv, www.mhe.gov.mv



CONTROL POINT DETAILS		Station Number 5244
Coordinate Information		
Geodetic		Grid
WGS 84		UTM Zone 43
Lat: 4°32'05.37379"N		E: 319469.3645m
Long: 73°22'21.98438"E		N: 501447.7603m
Ellp Height: -93.609m		Orth Height: 1.1683
Island Name: Ziyaaraifushi		Date: 14 <sup>th</sup> July 2012

## Monument description & method of survey:



**PSM type:** PSM type A (finish level approx. 150mm above ground level)

PSM was established using Topcon HiperII DGPS system. Static survey method was used for establishing the horizontal coordinates. Three PSM were set at site and data collected for three triangles. Approximately 6hrs 56min of data collected for line PSM 5244-5245, 3hrs 47min for line PSM5244-5246 and 3hrs 18mins for the line PSM5245-5246. Correction and adjustment are made using Topcon Tools software. MSL established by transferring water level (water level taken at 14<sup>th</sup> June 2012 16:45) and reducing to MSL using Hulhule predicted tide data set.

## General site condition & access:

The PSM 5244 is located near the north end of the island facing east; just inside the vegetation line close to the revetment structure. The PSM5244 is in line of sight to PSM5245. The PSM can be accessible from the beach. Sky view is clear of obstruction apart from North West, West and South Western side (obstructing at 50° elevation angle)

**Owner:** Summer Island Village. The resort management takes full responsibility for safeguarding the PSM.

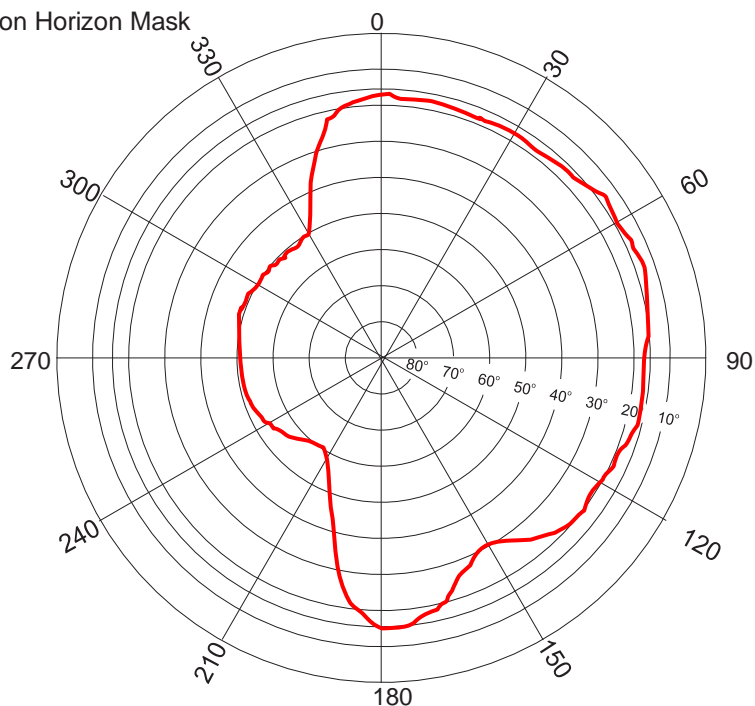
		
Bottom	North	East
		
Up	South	West

# SITE INFORMATION

Station Number

P S M 5 2 4 4

Station Horizon Mask

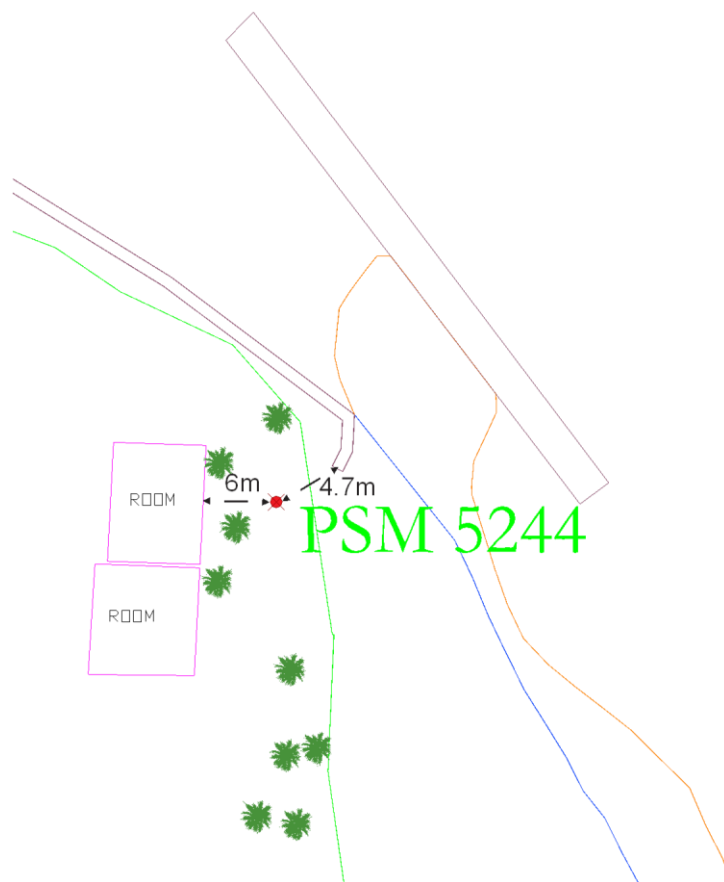


Height above Marker that horizon was mapped from 2.058 m

Magnetic Declination  
Declination applied to this figure?  
☐ Yes ☒ No



Locality



Sketched by: Usman Mohamed

Scale: Not to scale

Date: 15<sup>th</sup> June 2012



CONTROL POINT DETAILS		Station Number 5245
Coordinate Information		
Geodetic	Grid	
WGS 84	UTM Zone 43	
Lat: 4°32'03.05456"N	E: 319484.3943m	
Long: 73°22'22.47714"E	N: 501376.4864m	
Ellp Height: -93.684	Orth Height: 1.0990	
Island Name: Ziyaaraifushi	Date: 14 <sup>th</sup> July 2012	

#### Monument description & method of survey:

**PSM type:** PSM type A (finish level approx. 150mm above ground level)

PSM was established using Topcon HiperII DGPS system. Static survey method was used for establishing the horizontal coordinates. Three PSM were set at site and data collected for three triangles. Approximately 6hrs 56min of data collected for line PSM 5244-5245, 3hrs 47min for line PSM5244-5246 and 3hrs 18mins for the line PSM5245-5246. Correction and adjustment are made using Topcon Tools software. MSL established by transferring level from PSM5244 as part of level run.

#### General site condition & access:

The PSM 5245 is located south of PSM5244; close to the Y shaped groyne. The PSM5245 is in line of sight to PSM5244. The PSM can be accessible from the beach. Sky view is clear of obstruction apart from Western side (obstructing at 30° elevation angle). The structures made of roofing sheets on images North, East and West are temporary structures which would be removed after completion of renovation works; therefore these structures are omitted in the horizontal mask drawing.

**Owner:** Summer Island Village. The resort management takes full responsibility for safeguarding the PSM.



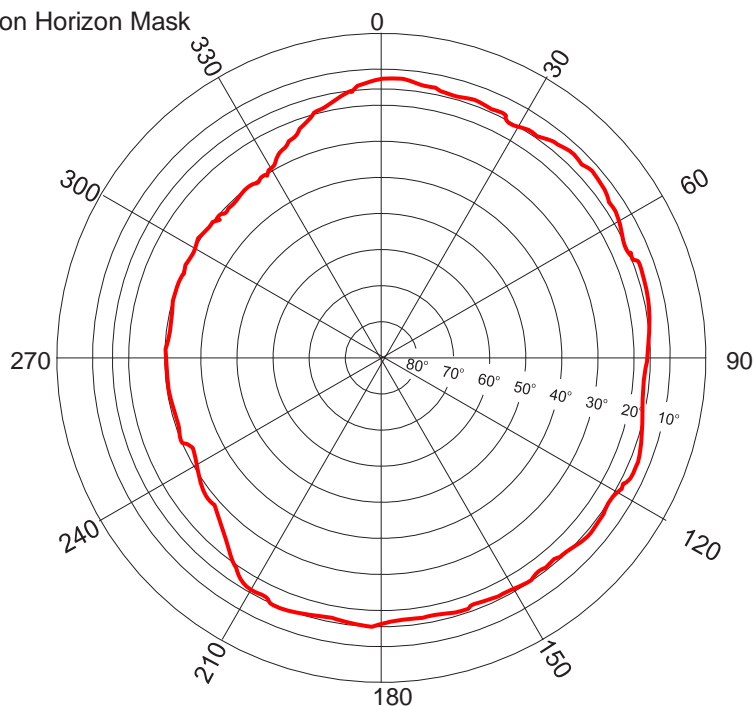


# SITE INFORMATION

Station Number

P S M 5 2 4 5

Station Horizon Mask



Height above Marker that horizon was mapped from 1.79 m

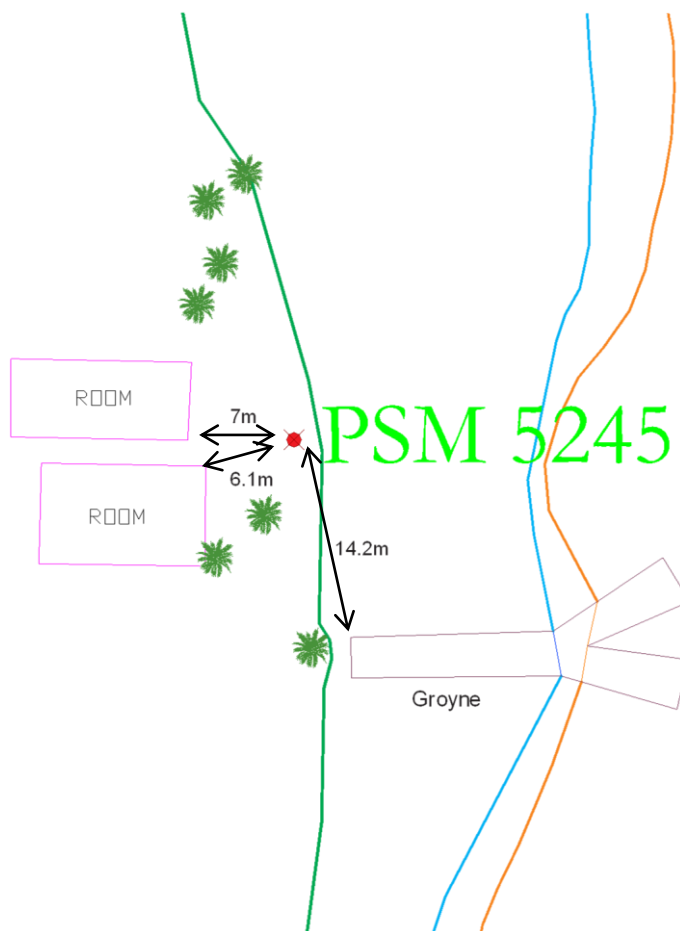
Magnetic Declination  
Declination applied to this figure?  
☐ Yes ☒ No



Locality



Image © 2012 DigitalGlobe



Sketched by: Usman Mohamed

Scale: Not to scale

Date: 15<sup>th</sup> June 2012



CONTROL POINT DETAILS		Station Number 5246
Coordinate Information		
Geodetic	Grid	
WGS 84	UTM Zone 43	
Lat: 4°31'54.59918"N	E: 319405.0735m	
Long: 73°22'19.92288"E	N: 501116.9389m	
Ellp Height: -93.333m	Orth Height: 1.0097	
Island Name: Ziyaaraifushi		Date: 14 <sup>th</sup> July 2012

**Monument description & method of survey:**

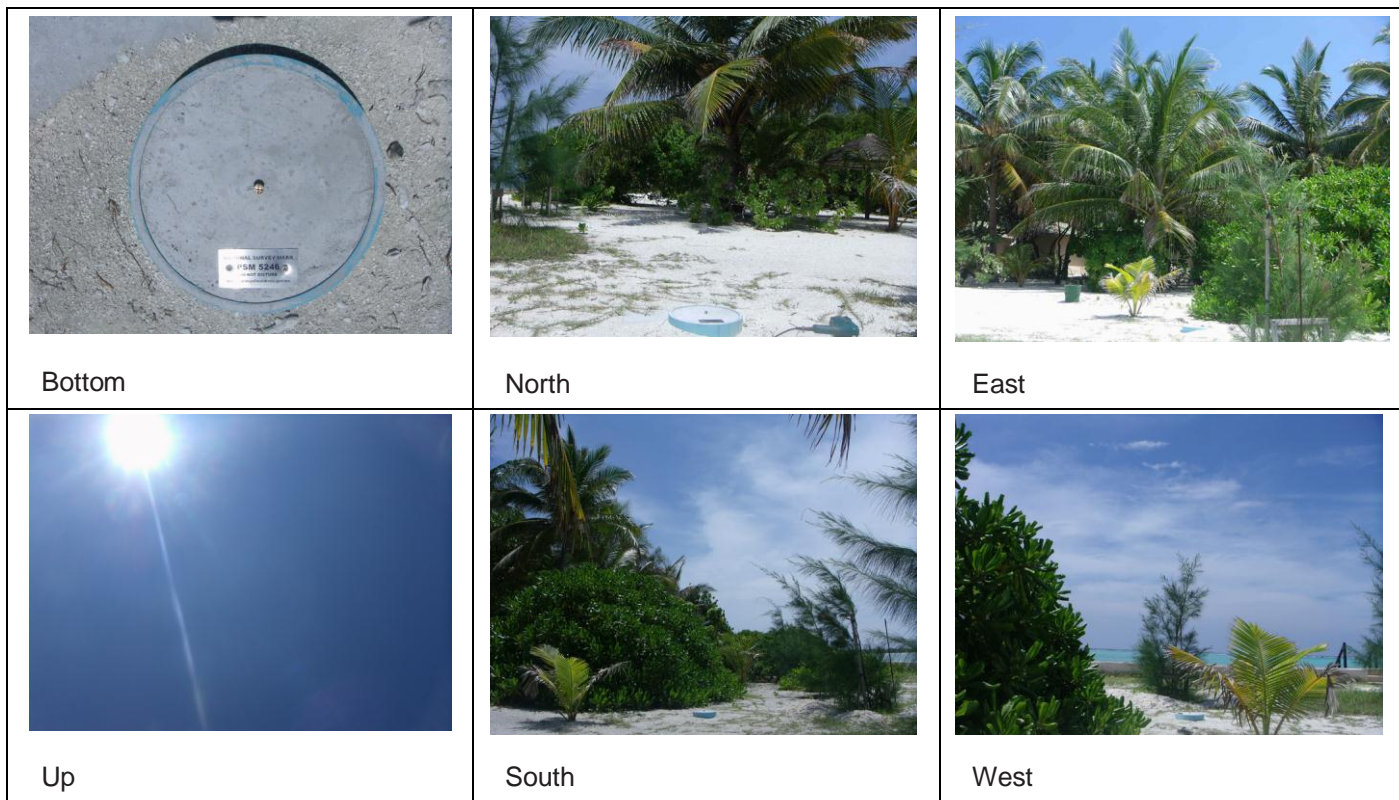
**PSM type:** PSM type A (finish level approx. 150mm above ground level)

PSM was established using Topcon HiperII DGPS system. Static survey method was used for establishing the horizontal coordinates. Three PSM were set at site and data collected for three triangles. Approximately 6hrs 56min of data collected for line PSM 5244-5245, 3hrs 47min for line PSM5244-5246 and 3hrs 18mins for the line PSM5245-5246. Correction and adjustment are made using Topcon Tools software. MSL established by transferring level from PSM5245 as part of level run.

**General site condition & access:**

The PSM 5246 is located close to the dive centre at the southern side of the island facing west. The PSM can be accessible from the beach and walk way leading to the dive centre. Sky view is clear of obstruction apart from North East and South Eastern side (obstructing at 40° elevation angle)

**Owner:** Summer Island Village. The resort management takes full responsibility for safeguarding the PSM.

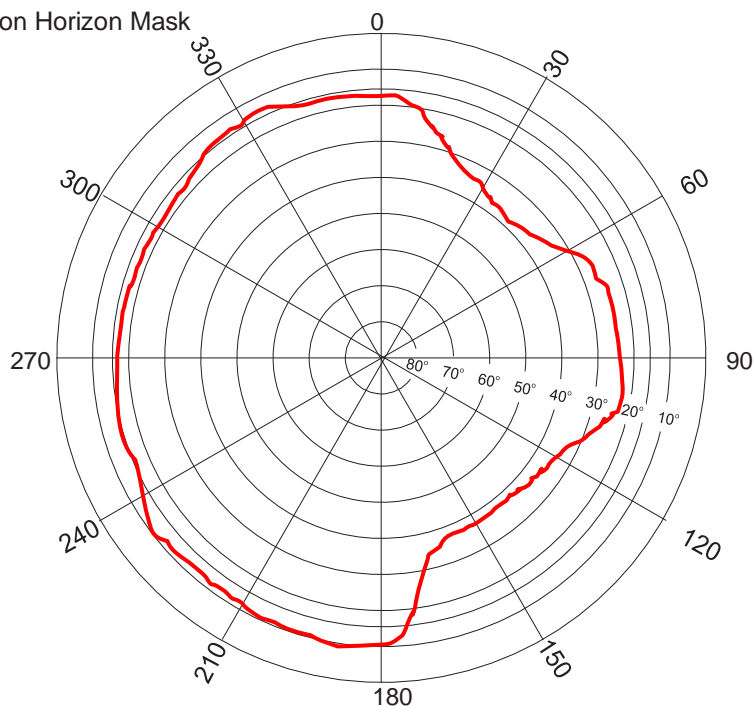


# SITE INFORMATION

Station Number

P S M 5 2 4 6

Station Horizon Mask



Height above Marker that horizon was mapped from 2.058 m

Magnetic Declination  
Declination applied to this figure?  
☐ Yes ☒ No



Locality



Revetment wall

8.5m

PSM 5246

16.5m

DIVE CENTER



Sketched by: Usman Mohamed

Scale: Not to scale

Date: 15<sup>th</sup> June 2012

MALDIVES LAND AND SURVEY AUTHORITY, MINISTRY OF HOUSING AND INFRASTRUCTURE, Ameene Magu, Maafannu, Male', 20392, Maldives,  
Office (PABX): +(960) 3004300, Fax: +(960) 3004254, Email: survey@mhe.gov.mv, Web: www.surveyofmaldives.gov.mv, www.mhe.gov.mv